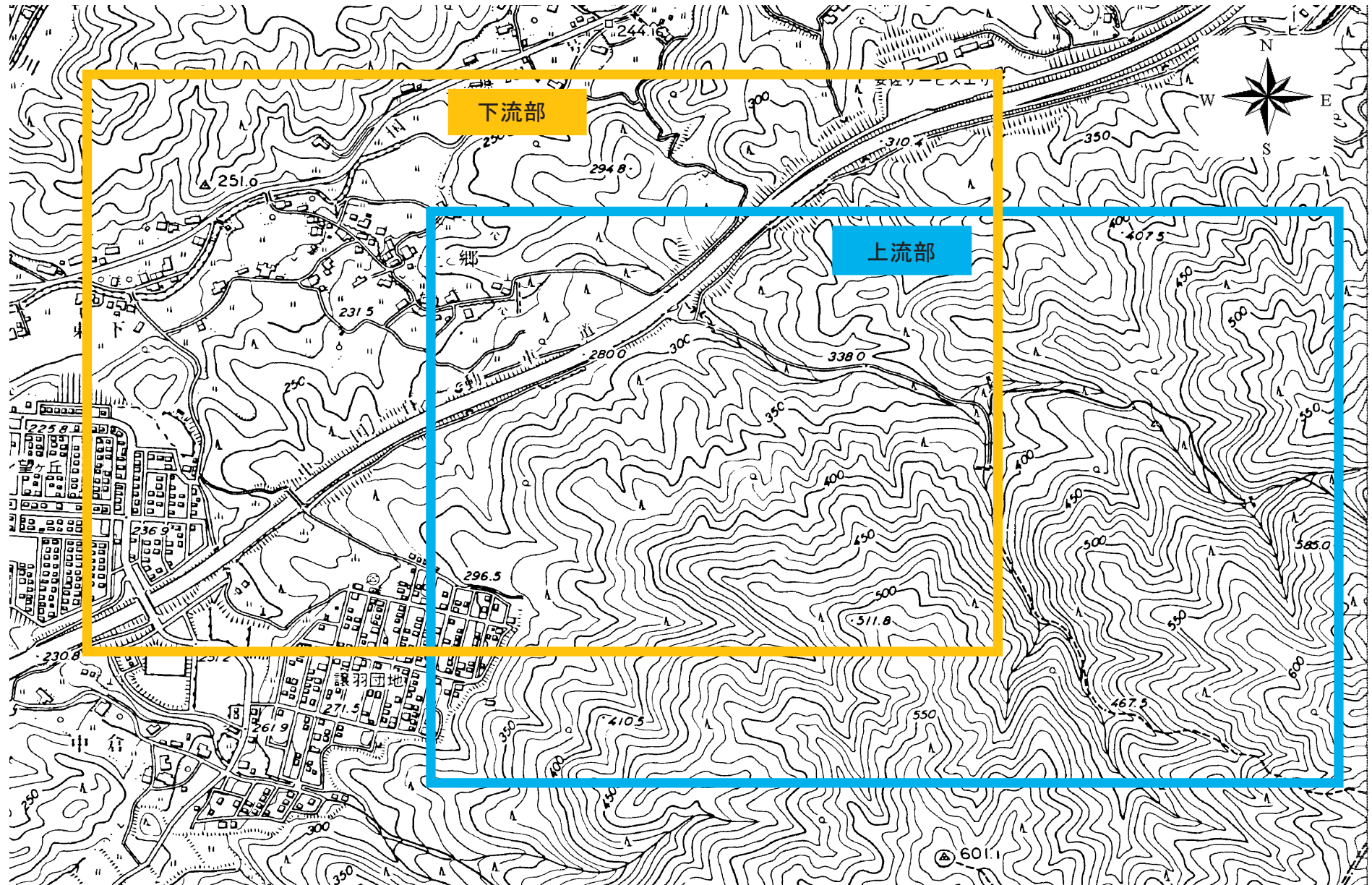
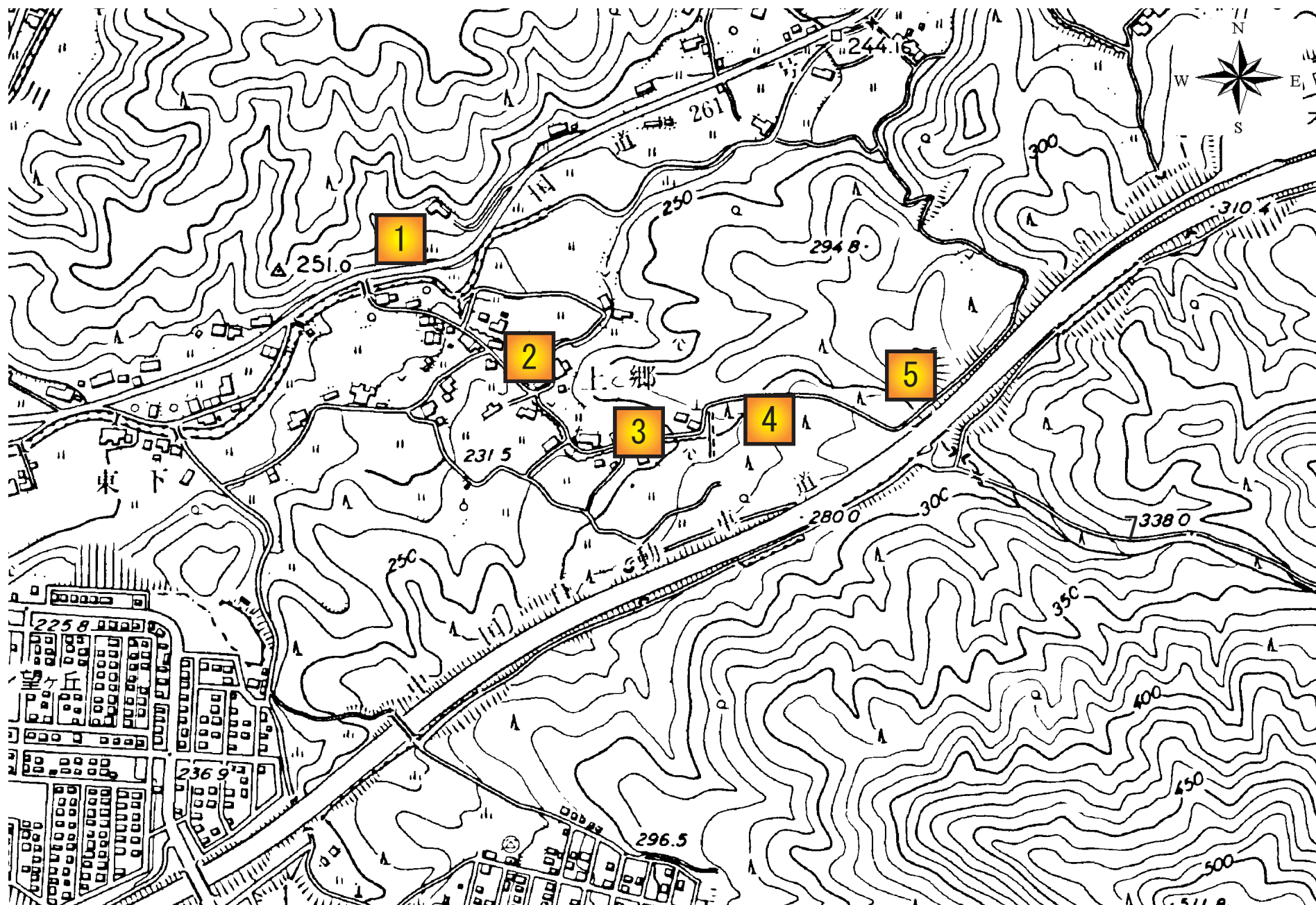


(8) 太田川水系 猪谷川

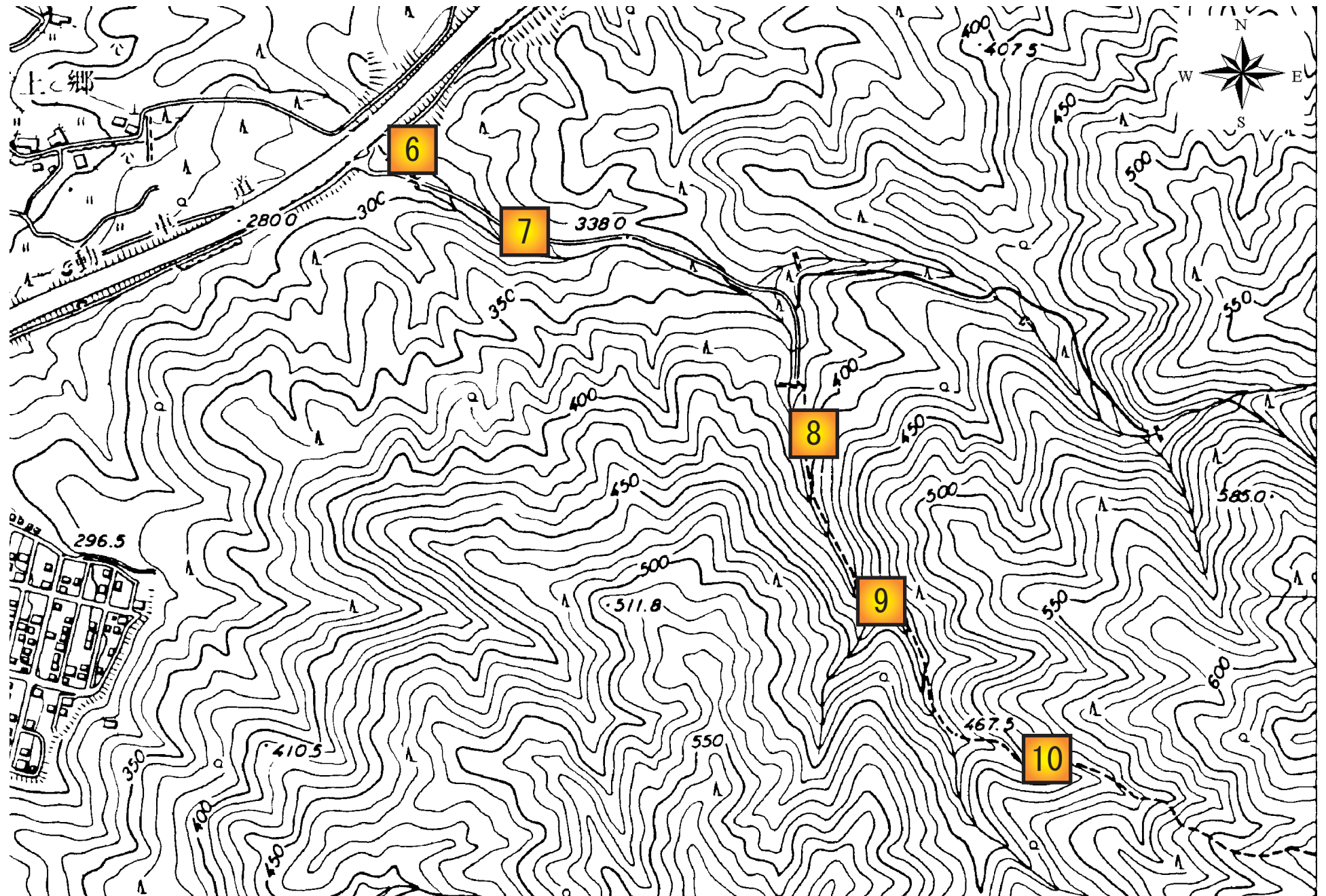
撮影位置図





(8) 太田川水系 猪谷川

撮影位置図(上流部)





1-1



1-2





2-1



2-2



2-3



2-4



2-5



2-6



2-7



2-8



2-9



2-10



2-11



3-1



3-2



3-3



3-4



[次ページへ](#)



4-1



4-2



4-3



4-4



4-5



4-6



4-7



4-8



4-9



4-10



4-11



4-12



4-13



4-14



4-15

[前ページへ](#)



4-16



4-17



4-18





5-1



5-2



5-3



5-4



5-5



5-6



6-1



6-2



6-3



6-4



6-5



7-1



7-2



7-3



7-4





8-1



8-2



8-3



8-4



8-5



8-6



8-7



8-8



8-9



9-1



9-2



9-3



10-1



10-2



10-3

1-1



1-2





2-1



2-2





2-3



2-4



2-5



2-6





2-7



2-8



2-9



2-10





2-11





3-1



3-2



3-3



3-4





4-1



4-2





4-3



4-4





4-5



4-6





4-7



4-8





4-9



4-10





4-11



4-12





4-13



4-14





4-15



4-16





4-17



4-18





5-1



5-2





5-3



5-4





5-5



5-6





6-1



6-2





6-3



6-4







7-1



7-2





7-3



7-4





8-1



8-2



8-3



8-4





8-5



8-6



8-7



8-8







9-1



9-2







10-1



10-2





10-3

