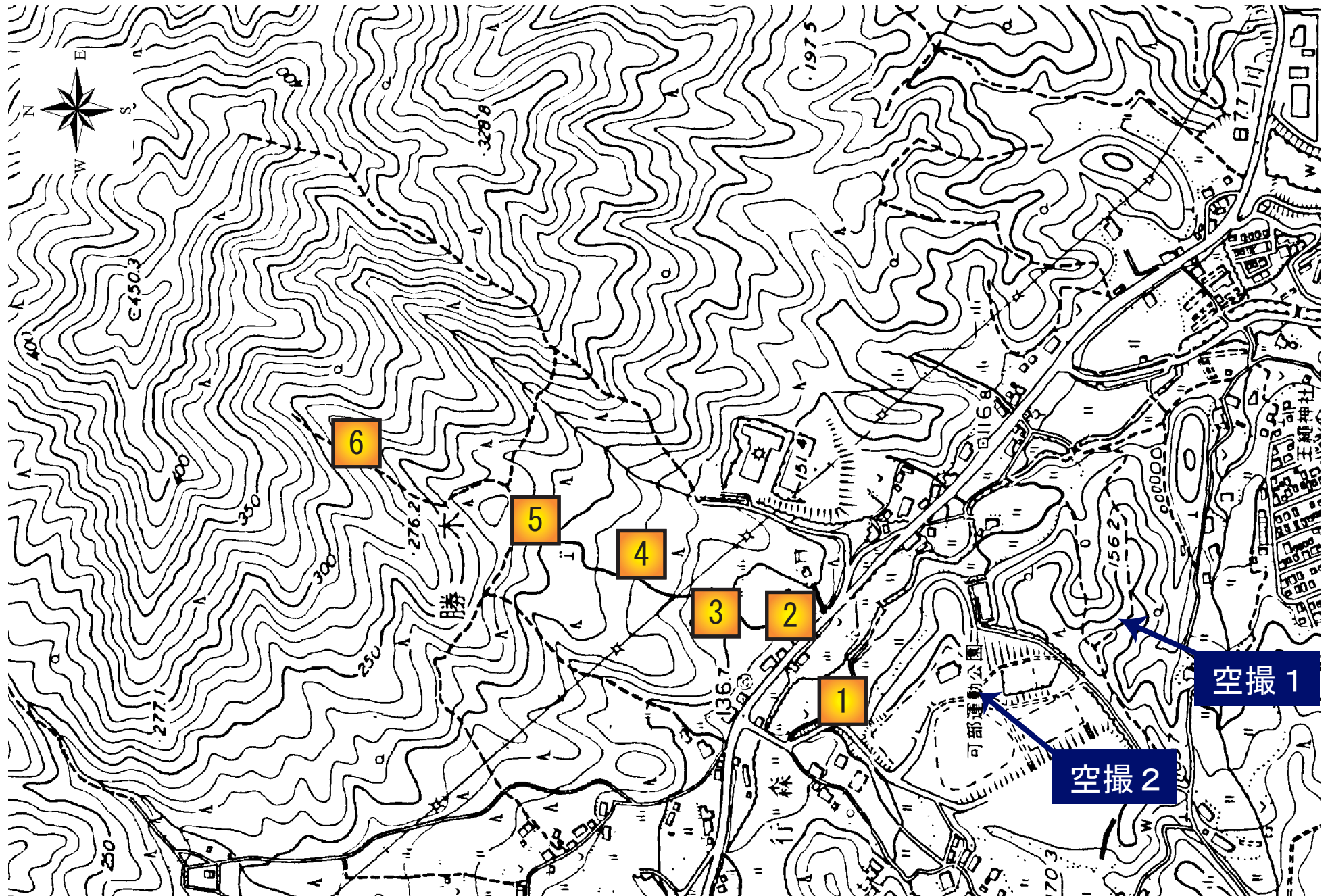


(7) 太田川水系 北山口川

撮影位置図





1-1



1-2



1-3



1-4



1-5



2-1



2-2



2-3



2-4



2-5



2-6



2-7



2-8



2-9



2-10



2-11



2-12



2-13



2-14



2-15



3-1



3-2



3-3



4-1



4-2



4-3



4-4



4-5



4-6



4-7



4-8



4-9



4-10



5-1



5-2



5-3



5-4



5-5



5-6



6-1



6-2



6-3



6-4

1-1



1-2





1-3



1-4



1-5



2-1



2-2



2-3



2-4



2-5



2-6



2-7



2-8



2-9



2-10



2-11



2-12





2-13



2-14







3-1



3-2



4-1



4-2



4-3



4-4



4-5



4-6



4-7



4-8





4-9



4-10



5-1



5-2



5-3



5-4



5-5



5-6



6-1



6-2



6-3



6-4



空撮-1



空撮-2

